

December 28, 2007

Special Holiday Edition

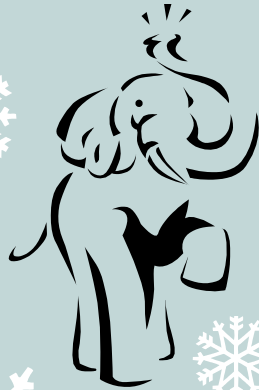
Eye Opener

Oshkosh Morning Rotary



Rotary Clubs and Christmas Around the World

- Club Holiday Social
Saturday, January 5th
at 6:30 p.m. at Tim
Mansell's home. Bring
your "white elephant"



- We need Speakers,
please let Stan know.

Rotary Club of Donaghadee, District 1160 Ireland.

In the run up to Christmas its been a case of shoulders to the Rotary wheel for the members of Donaghadee Rotary Club. The members have been living up to the Rotary motto of Service Before Self as they acted as Santa and Santa's helpers at The Donaghadee Garden Centre and Dickson's Garden Centre during the past two weekends and again next weekend.



Donaghadee Club's Santa.



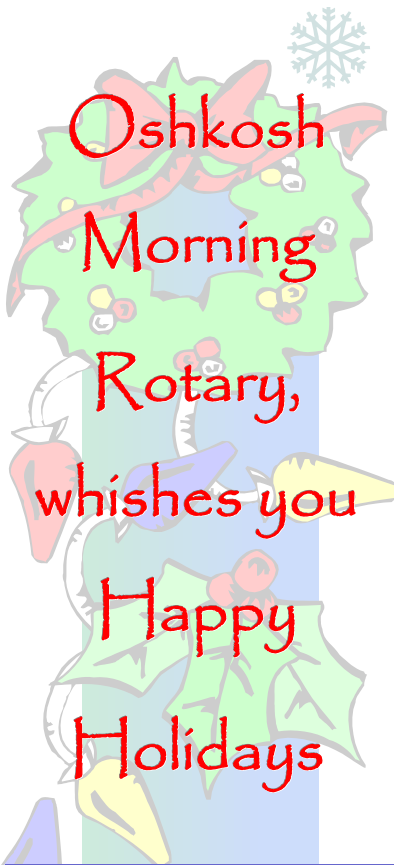
On Tuesday 14th Dec some 90-shoe boxes filled by the club members and their friends were dispatched via The Rotary Shoe Box Scheme to Eastern Europe. Since 1994 the scheme has sent tens of thousands of shoeboxes filled with toys make-up sports - wear and household articles to needy children and families in Eastern Europe.

Waterford Rotary Memorial Christmas Tree Appeal

This year marks the 10th successive year that the Rotary Club of Waterford has organized the Memorial Christmas in aid of Waterford Hospice. This Memorial Tree has now become synonymous with Christmas in Waterford and has captured the hearts of locals and visitors alike. The main purpose of the tree is to give people the opportunity to remember, in a very poignant way, their deceased loved ones at this time of year and also contribute to the excellent work being done by the hospice movement.

The Rotary Club has been an outstanding supporter of the work of the Hospice movement ever since the organization was established nineteen years ago. The Directors of Waterford Hospice have confirmed that the Memorial Tree now represents the largest single fund raising effort to benefit them in Waterford. The total (continued on back)





Date	Speaker	Topic	Representing
1/4/2008	Daryll Sims	UWO Sports Complex	UWO
1/5/2007	@ Tim Mansell's	Club Holiday Social	At 6:30 p.m.
1/11/2008	Open		
1/18/2008	Open		
1/25/2008	Chief Greuel	Update	Oshkosh Police
2/1/2008	Open		
2/8/2008	Dave Brantingham	Fishing on the Amazon	Dave Brantingham

Waterford Rotary Memorial Christmas Tree Appeal Cont.
 raised over the past nine years is well in excess of €300,000. Waterford Hospice has also confirmed that they have been building up a fund over the past few years to help establishment of a Hospice Building in Waterford. They have committed to a figure of €2,000,000 to the project.

Rotary Club Christmas trees delayed a week

KAHULUI – The delivery of Kahului Rotary Club Christmas trees has been postponed a week

Rotary donates Christmas gifts to children at The Royal London Hospital

19 December 2007

The Rotary Club of Tower Hamlets has delivered some Christmas cheer to some very excited patients on the children's wards at The Royal London Hospital in Whitechapel.



Senior Play Specialist Emma Brown, Rotarian Colin Bryant, with patients Anthony, Regan, Clarence, toddler Sebastian with his mother Paola and Senior Play Specialist Michelle Teague at The Royal London Hospital.

Senior Play Specialist Michelle Teague said the donation of dozens of gifts for children was a tremendous gesture.

"Sadly there are children who will not be well enough to go home for Christmas Day, so it's wonderful that through the generosity of others these children still get to enjoy the holiday spirit," she said.

Tower Hamlets Rotarian Colin Bryant said: "We do this to support the fantastic work done by medical and support staff at The Royal London and to show how much we appreciate their commitment to those in their care."

Gifts are donated by Rotary Clubs all over London to bring happiness to children who spend the holiday in hospital.

